

Fellgrößen - Parameter

LP Fellgröße = Kronendurchmesser in Zoll



Fellgrößen - Parameter

LP Fellgröße = Kronendurchmesser in Zoll



LP Rim Evolution



T

Traditional
Rim



SS

Soft Strike
(Comfort
Curve 1)



X

Comfort
Curve 2



Z

Comfort
Curve 2
(Extended
Collar)



TT

Comfort
Curve 2
(Extended
Collar)



LP Rim Evolution – Skin Wires

T/SS/X Rims vs. **Z/TT Rims**



11" Quinto



11 3/4" Conga



12 1/5" Tumba



LP265/M265 Skin Wires

are 9,5 mm (3/8") wider than

LP274 Skin Wires

T/X/SS Rims

are 9,5 mm (3/8") wider than

Z/TT Rims

→ Crown Diameters are identical!



Tipps for Head Choice

LP Product Codes contain information about the Rim

Nothing → Traditional Rim

X → Comfort Curve 2 X Series Rim

Z → Comfort Curve 2 Z Series Rim (Extended Collar)

T → Comfort Curve 2 Top Tuning (Z Series Profile)

Examples:

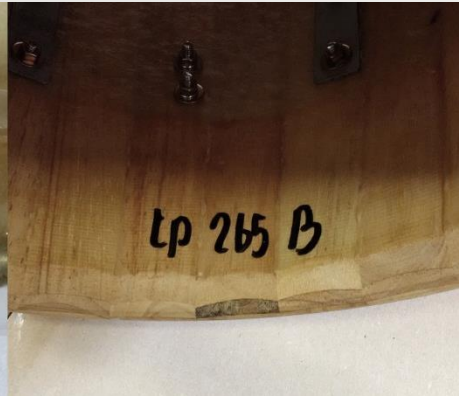
LP522X-1RD → 22 for Quinto, X for X Series Rim → Head = LP265A (11")

LP552T-VSB → 52 for Tumba, T for Top Tuning Rim → Head=LP274C (12 ½")



Tipps for Head Choice

Hints on Shell and Rims



X Rim

Z Rim

- Heads may have their Part ID stamped on
- Conga Shells equipped with sticker or handwritten Codes containing the Head ID
- Comfort Curve 2 Rims with engravings:
 - Type (X or Z)
 - Drum Size
- Older Rims without engraving are likely to use T/SS/X sized Heads (M265, LP265)



Tipps for Head Choice

Flat Skins



Available for Congas, Bongos and Djembé

- Soak in warm water together with the old Head
- Soaking time depends on thickness
(approx. 8h for Conga Skins, 3-3,5h for Bongos and 2h for Djembe)
- Reuse old Skin Wire



Other Rims

EZ Curve Rims



Aspire EZ Curve



City EZ Curve

equal older CP EZ Rims

EZ Curve Rims only differ in appearance and, but use the same Head Dimensions (Full Diameter and Crown Size)

Other Instruments

- Bongos → No extended Collar Designs
- Djembe → Wood Djembes use Conga Rims (Aspire 12", X Series on 12,5" Pro)
- Timbales and Brazilian → Standard Drum Set Head Properties



Other Rims

Djembe

Regular Conga Rims

LP & Galaxy Wood with CC2 Conga Rim

- 12,5" → X Series
- 14" → Z Series

Aspire

- 12,5 → EZ Rims 12"

Bongos

- Only one CC2 Version using same Heads as Traditional Bongo Rims

Brazilian & Timbales

- Modeled around standard Heads for Drumset

