

♩ = 112

Musik: Marie Wilhelmine Anders
Text: Robert Louis Stevenson

Verse 1, 2, 3

1. Great is the sun and wide he goes
2. Though clo - ser still the blinds we pull
3. The dus - ty at - tic spi - der - clad

Am11 D/F# Am11

through emp - ty hea - ven.
to keep the sha - dy par - lour cool,
he through the key - hole ma - keth glad;

D2 Am9

And in the blue and glow - ing days
yet he will find a chink or two
and through the bro - ken edge of tiles,

Am11 D/F# Am11

11

more thick than rain — he show-ers his rays, more thick than rain. —
 to slip his gold - den fin - gers through, to slip his gol-den —
 in - to the lad - der - ed hay - loft smiles, in - to the — ladd'-red

11

D2 C/G Gm7/D F(sus2) C/E C/G Gm7/D

15

1. 2.

fin - gers through. A -
 hay - loft smiles.

15

AbΔ Gm7/Bb AbΔ Gm7/Bb FΔ C(add2)/G

20 Chorus

bove the hill, — a - long the blue. —

20

AbΔ Gm7/Bb AbΔ

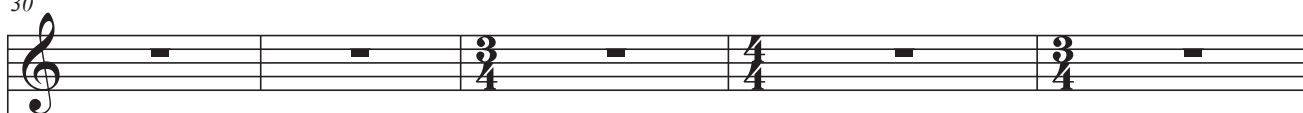
25



25

Piano accompaniment for measures 25-26. Measure 25 features a G4 chord in the right hand and a G3 chord in the left hand. Measure 26 features an F4 chord in the right hand and an F3 chord in the left hand. Chord symbols FΔ and AbΔ are written above the right hand staff.

30



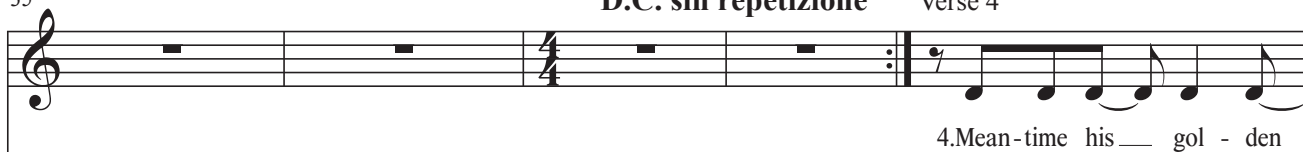
30

Piano accompaniment for measures 30-34. Measure 30 features a Gm7/Bb chord. Measure 31 features a Gm7/Bb chord. Measure 32 features an AbΔ chord and a Bb chord. Measure 33 features a C chord. Measure 34 features an AbΔ chord and a Bb chord. Chord symbols are written below the left hand staff.

35

D.C. sin repetizione

Verse 4



35

Piano accompaniment for measures 35-36. Measure 35 features a G chord and a Cm9/Eb chord. Measure 36 features an AbΔ chord and a Bb chord. Chord symbols are written below the left hand staff. Measure 36 also features a Cadd2 chord in the right hand and an Am11 chord in the left hand.

40

_____ face a - round _____ he bares to all the gar -

40

D/F# Am11 D2 Am9

This system contains measures 40 through 43. The vocal line begins with a half note G4, followed by quarter notes A4, B4, and C5, then a half note D5. There is a whole rest in measure 41, followed by a half note E5 in measure 42, and a half note D5 in measure 43. The piano accompaniment consists of four measures. Measure 40 has a D/F# chord. Measures 41 and 42 have an Am11 chord. Measure 43 has a D2 chord. Measure 44 has an Am9 chord.

44

_____ den ground, and sheds a _____ warm an _____ glitt' - ring look _____

44

Am11 D/F#

This system contains measures 44 through 47. The vocal line starts with a half note G3, followed by quarter notes A3, B3, and C4, then a half note D4. There is a whole rest in measure 45, followed by a half note E4 in measure 46, and a half note D4 in measure 47. The piano accompaniment consists of four measures. Measures 44 and 45 have an Am11 chord. Measure 46 has a D/F# chord. Measure 47 has a D/F# chord.

48

_____ a - mong the i - vy's im - ers-most nook, a -

48

Am11 D2 C/G Gm7/D F(sus2) C/E

This system contains measures 48 through 51. The vocal line begins with a half note G3, followed by quarter notes A3, B3, and C4, then a half note D4. There is a whole rest in measure 49, followed by a half note E4 in measure 50, and a half note D4 in measure 51. The piano accompaniment consists of four measures. Measure 48 has an Am11 chord. Measure 49 has a D2 chord. Measure 50 has C/G and Gm7/D chords. Measure 51 has F(sus2) and C/E chords.

52

Chorus

mong the i - vy. A - bove the hill, _____

C/G Gm7/D A \flat Δ Gm7/B \flat F Δ C(add2)/G A \flat Δ

57

_____ a - long the blue. _____

Gm7/B \flat A \flat Δ

62

_____ a - bove the hill, _____

F Δ A \flat Δ Gm7/B \flat

67 (backing vocals)

a - long the blue. Round the bright air with foo-ting true.

67

A \flat Δ F Δ

71 (backing vocals)

please the child to _____ paint the rose, to

71

A \flat Δ G m7/B \flat

76

please the child. the garden-er of the world, —

76

A \flat Δ F maj7(9) A \flat Δ

81

the garden-er of the world, _____

81

Gm7/Bb

AbΔ

86

the garden-er of the world _____ he goes. _____

86

F maj7(9)

C(add2)/G

A m(add11)

Bb

C(add2)

Verse 1

Great is the sun, and wide he goes
Through empty heaven.
And in the blue and glowing days
More thick than rain he showers his rays,
more thick than rain.

Verse 2

Though closer still the blinds we pull
To keep the shady parlour cool,
Yet he will find a chink or two
To slip his golden fingers through,
To slip his golden (fingers through).

Chorus

Above the hill. Along the blue.
Above the hill.

Verse 3

The dusty attic spider-clad
He, through the keyhole, maketh glad;
And through the broken edge of tiles,
Into the laddered hayloft smiles,
Into the laddered hayloft (smiles).

Chorus

Above the hill. Along the blue.
Above the hill.

Verse 4

Meantime his golden face around
He bares to all the garden ground,
And sheds a warm and glittering look
Among the ivy's inmost nook,
Among the ivy.

Chorus 2 und Ende

Above the hills, along the blue.
Above the hills, along the blue.
Round the bright air with footing true,
To please the child, to paint the rose, to please the child
The gardener of the world, The gardener of the world,
The gardener of the world, he goes.