

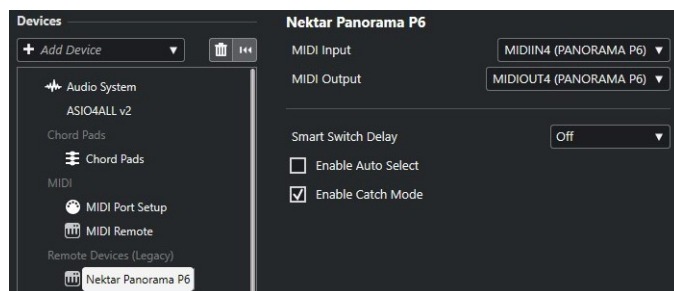
Panorama Installation and Setup in Cubase

1. Locate the installer "Panorama_Steinberg_Support" in the downloaded package and run it.
2. With installation complete, restart your computer and make sure Panorama is connected and switch on.
3. Launch Cubase and go to 'Studio/Studio Setup/MIDI Port Setup'.
4. Un-tick all Panorama ports in the "In 'All MIDI'" column, except the one labeled 'PANORAMA P_'.
PANORAMA P_
5. In the 'Visible' column, un-tick the following ports
MIDIIN2 (PANORAMA P_)
MIDIIN3 (PANORAMA P_)
MIDIOUT2 (PANORAMA P_)
MIDIOUT3 (PANORAMA P_)

The ports should appear as the image below.



6. Next check that Panorama appears as a Remote Device in the Devices list and select.
7. Set 'Smart Switch Delay' to off.
8. Un-tick 'Enable Auto Select'.
9. Check that MIDI Input is set to 'MIDIIN4 (Panorama P_) and MIDI Output is set to 'MIDIOUT4 [Panorama P_]'.
MIDIIN4 (Panorama P_) MIDIOUT4 [Panorama P_]



10. Click "Ok" and exit Device Setup.

That's it, setup is now complete and you can move on to the fun part, learning how it all works.